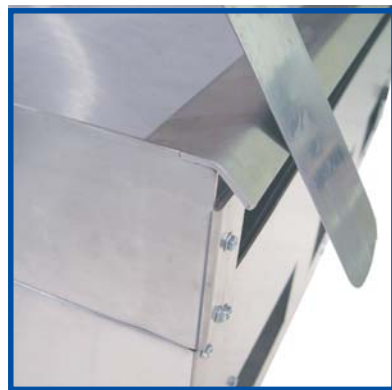


MagiKitch'n® Gas Griddle



**Protected flue area
to prevent debris
accumulation**



Extra Large 2.8 gallon grease container

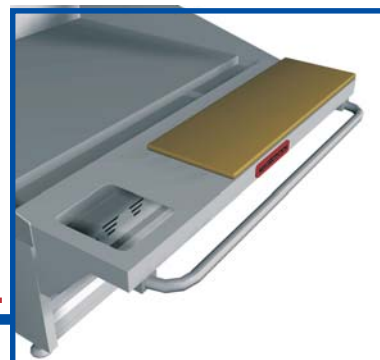


**Heavy duty 1" thick griddle
plate is also available chrome plated**



**Standard with snap-action thermostat, the MKG
can be upgraded to Electric or Solid State
thermostat. Both upgraded controls include
matchless spark ignition system.**

**Customize your griddle with a
service shelf, towel bar, cutting board and custom pan cut outs.**



MagiKitch'n®

There's Only One Thing That Can Top A **MagiKitch'n** Griddle Chrome



When you start with a premium griddle like the MagiKitch'n MKG, there's only one way to top it, with a Polished Chrome Griddle Plate. As if it isn't already enough that the MKG is available in 5 sizes, with 3 control options, Matchless Ignition and large 2.8 gallon grease container, now you can top it off with a premium Polished Chrome Griddle Plate.

MagiKitch'n[®]

MKG Gas Griddle

Exterior Construction

- ◆ Heavy 1" Thick Griddle Plate
- ◆ Double-walled And Reinforced Stainless Steel Cabinet
- ◆ No Exposed Fasteners Allowing Easy Cleanup

Standard Accessories

- ◆ Snap Action T-Stat
- ◆ 15,000 BTU Burner For Every 6" Of Griddle
- ◆ Thermostatically Controlled Every 12" Of Griddle
- ◆ Front Grease Trough
- ◆ Large 2.8 Gallon Grease Container (two on 72" model)
- ◆ 4" Legs (Can be removed for flush mounting)

Options And Accessories

- ◆ Electric T-stat With Matchless Ignition System
- ◆ Solid State T-stat With Matchless Ignition System
- ◆ Chrome Griddle Plate (Chrome kit includes scraper, palmetto brush, spatula and MagiKitch'n griddle cleaner)
- ◆ Service Shelf Available In 8", 10" or 12" Depth
- ◆ Pan Cutouts For 1/6 - 1/9 Pan On 10" Or 12" Shelves
- ◆ Towel Bar With Or Without Service Shelf
- ◆ Cutting Board For 10" or 12" Service Shelves (specify length)
- ◆ NSF Approved, Stainless Steel Griddle Stand
- ◆ Flue Diverter

	24"	36"	48"	60"	72"
					
					Second grease box on 72" model
Model	MKG24	MKG36	MKG48	MKG60	MKG72
Width	24"	36"	48"	60"	72"
Overall Height	20-1/2"	20-1/2"	20-1/2"	20-1/2"	20-1/2"
Working Height	15-3/4"	15-3/4"	15-3/4"	15-3/4"	15-3/4"
Grease Box Capacity	2.84 gals	2.84 gals	2.84 gals	2.84 gals	2.84 gals x 2
Number of Controls	2	3	4	5	6
BTU's	60,000	90,000	120,000	150,000	180,000
Shipping Weight (lbs)	309	465	615	775	855